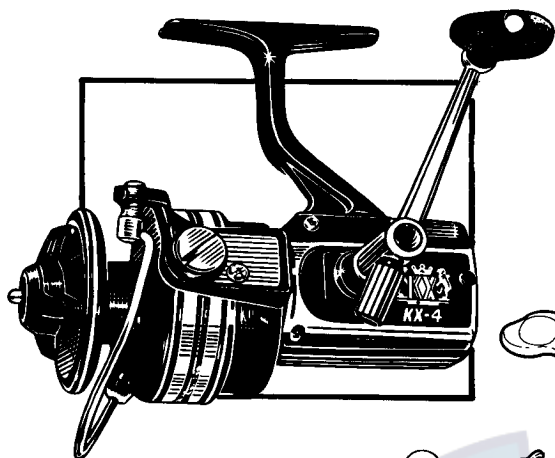
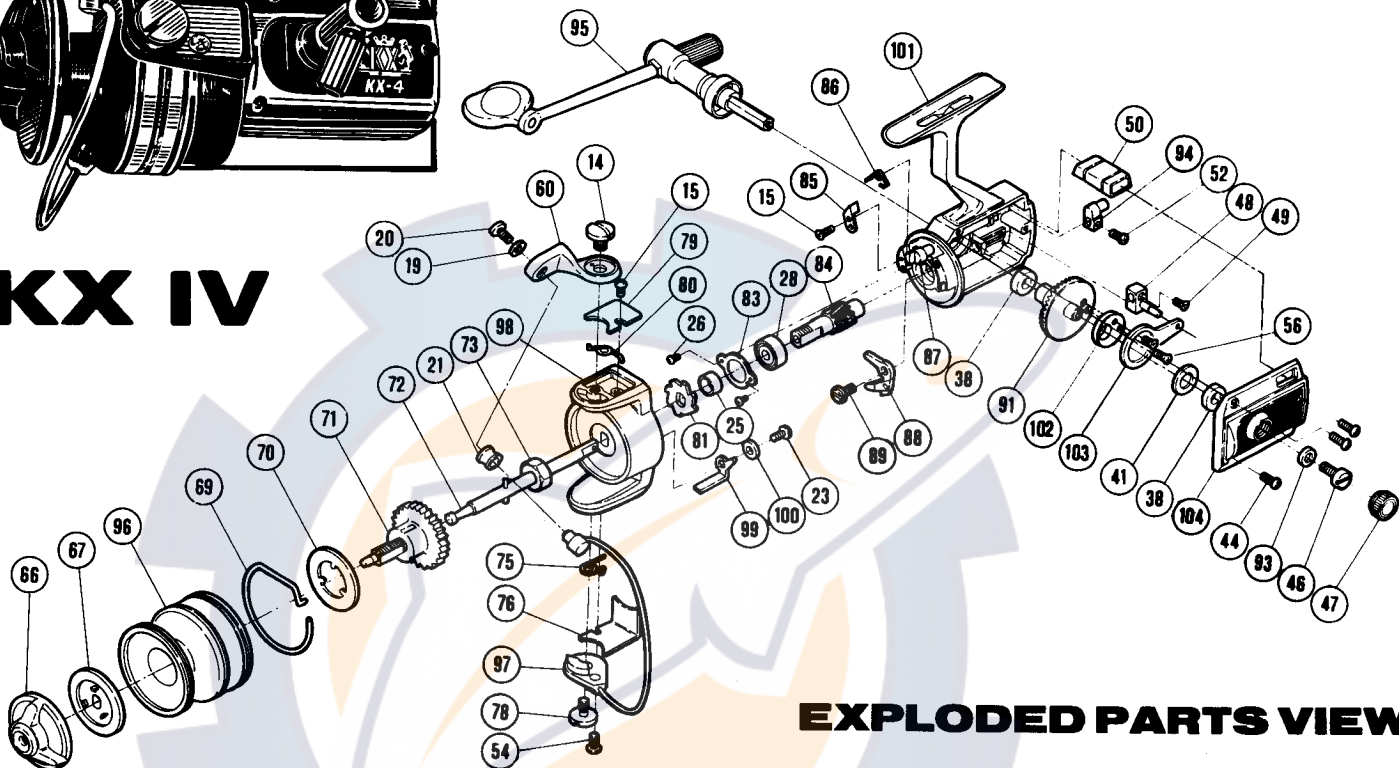


Shimano American Corporation, 205 Jefferson Road
Parisippany, N.J. 07054



KX IV



EXPLODED PARTS VIEW

PARTS LIST

PART #	DESCRIPTION	PRICE	PART #	DESCRIPTION	PRICE	PART #	DESCRIPTION	PRICE
14	Bail Mount Screw	.50	56	Oscillation Disk Screw	.15	85	Trip Cam	.35
15	Bail Spring Cover Screw	.15	60	Bail Mount	1.75	86	Anti Reverse Shaft Spring	.20
19	Line Guide Lock Washer	.15	66	Drag Adjusting Knob	2.00	87	Anti Reverse Shaft	.75
20	Line Guide Screw	.50	67	Drag Disk	.50	88	Anti Reverse Dog	1.00
21	Roller Line Guide	1.25	69	Click Spring	.50	89	Anti Reverse Dog Screw	.35
23	Trip Lever Screw	.15	70	Base Drag Washer	.15	91	Drive Gear	10.00
25	Anti Reverse Spacer	.25	71	Spool Spindle	4.00	93	Handle Screw Lock Washer	.20
26	Bearing Lock Screw	.15	72	Spool Axle	4.75	94	Anti Reverse Actuator	.65
28	Ball Bearing	5.00	73	Rotor Nut	.25	95	Handle	6.00
38	Drive Gear Bushing	.50	75	Trip Lever Spring	.25	96	Spool Shell	16.50
41	Thrust Washer	.15	76	Trip Lever Cover	.35	97	Bail Wire	2.70
44	Side Plate Screw	.15	78	Bail Wire Screw	.50	98	Rotor	7.00
46	Handle Retainer Screw	.40	79	Bail Spring Cover	.20	99	Trip Lever	.85
47	Dust Cap	.35	80	Bail Spring	.25	100	Trip Lever Spacer	.15
48	Oscillation Block	.65	81	Anti Reverse Ratchet	.50	101	Housing	11.00
49	Oscillation Block Screw	.15	83	Bearing Lock	.15	102	Oscillation Disk	.35
50	Anti Reverse Switch	1.00	84	Pinion Gear	4.25	103	Oscillation Guide	.40
52	Actuator Screw	.15				104	Side Plate	5.75
54	Trip Lever Cover Screw	.15						

Prices and specifications subject to change without notice.

FEBRUARY 1982